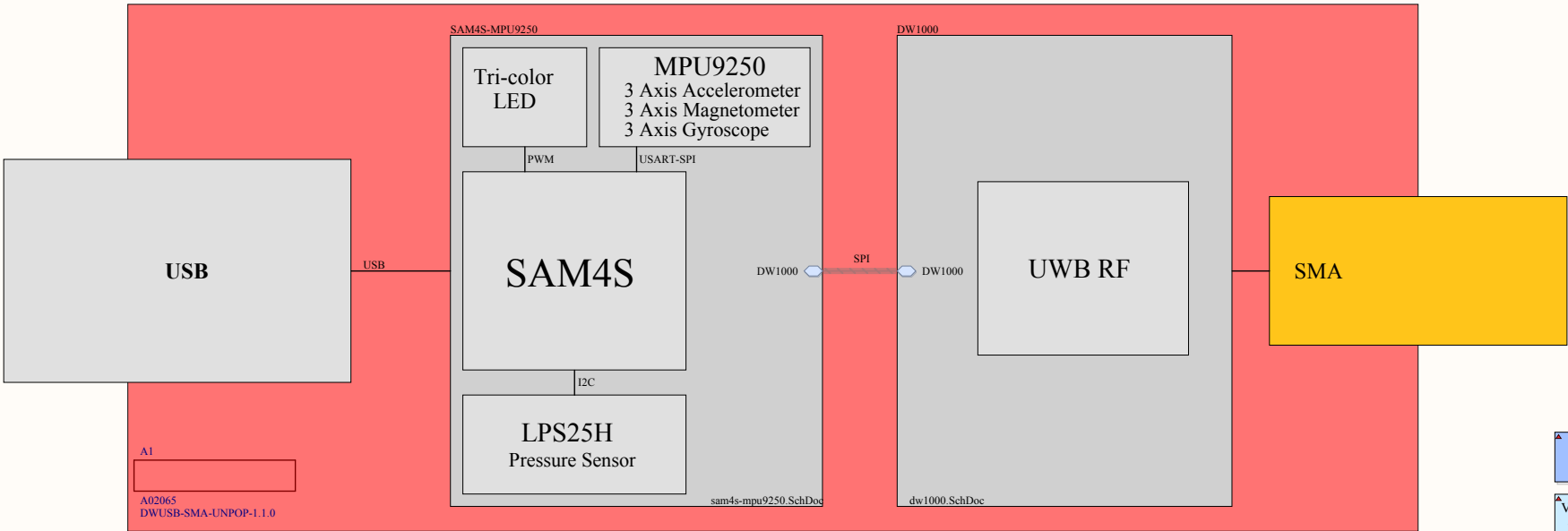
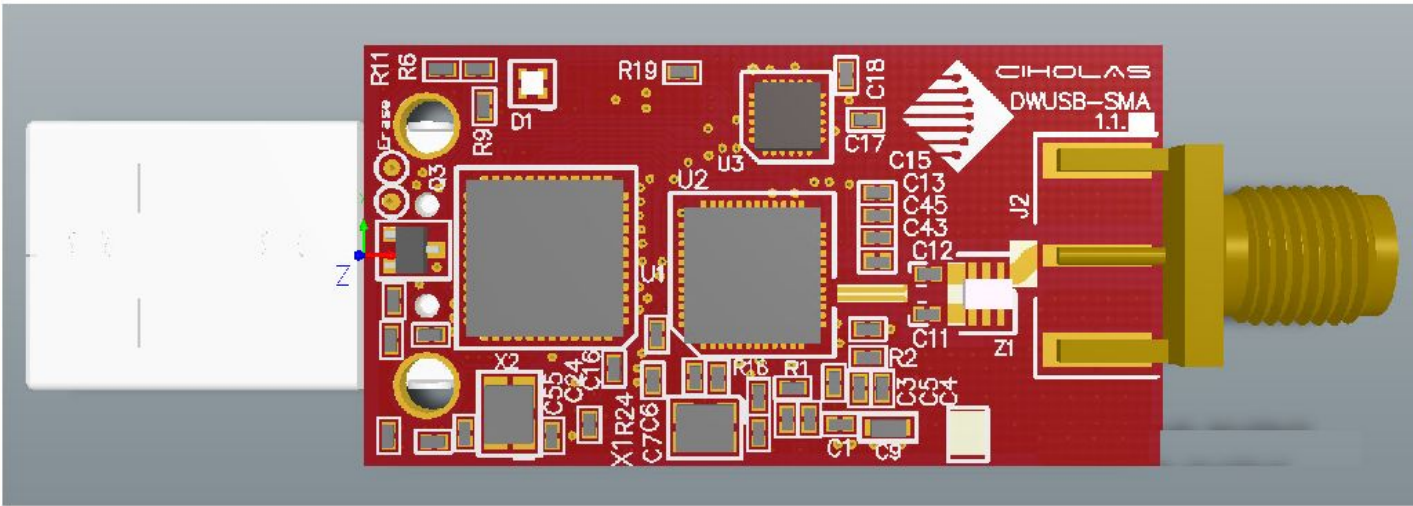



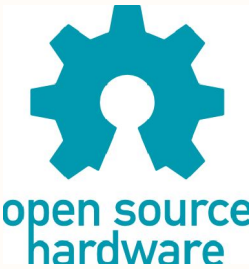
DWUSB-SMA : decaWave USB Evaluation Board



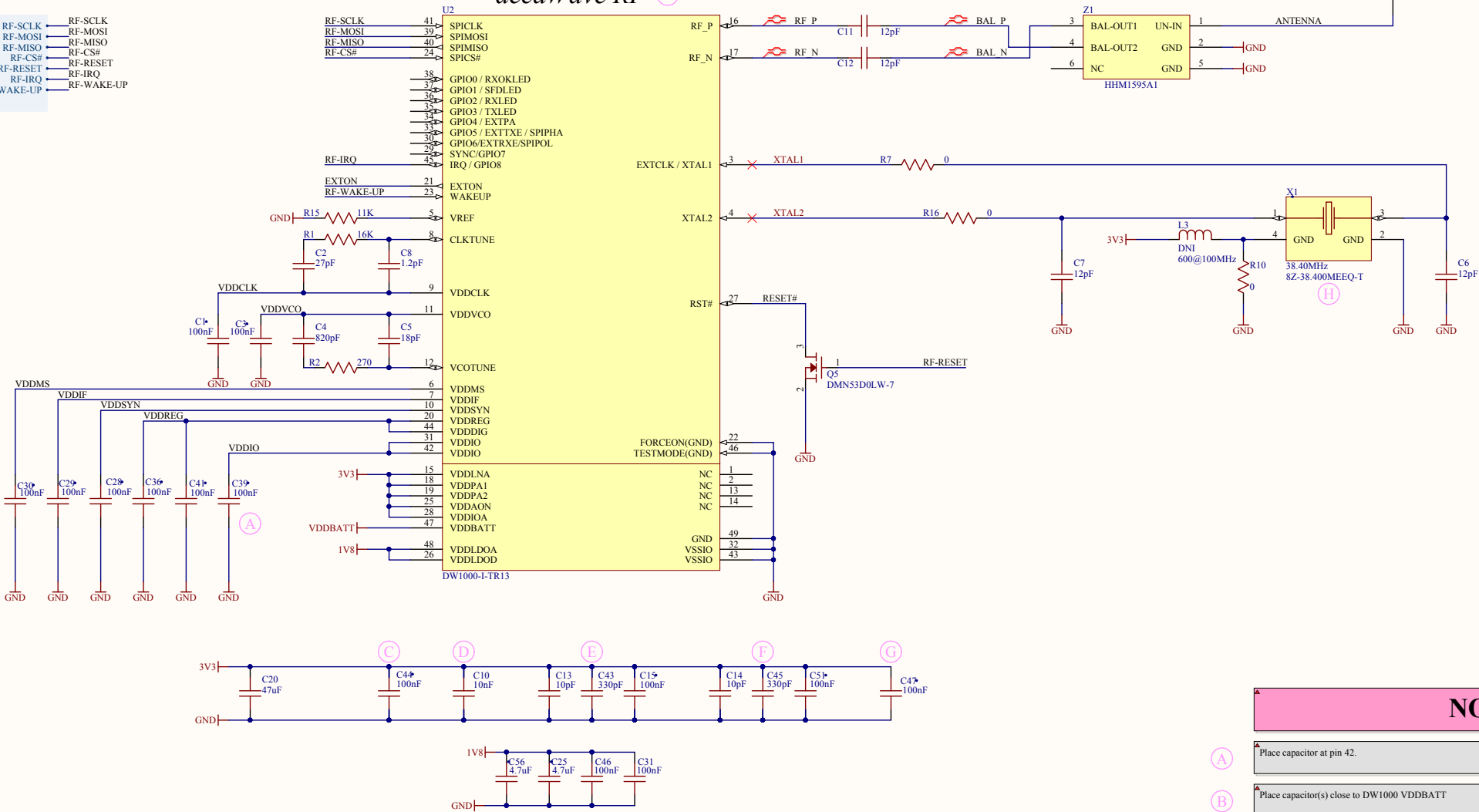
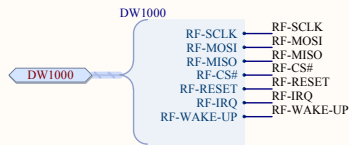
CHANGELOG

- Version 1.0.0
 - Initial design release
- Version 1.0.1
 - Fixed DNI parameter display issue with R10
 - Added R10 to BOM by clearing DNI parameter value
- Version 1.0.2
 - Aesthetic Updates only, no functional changes.
 - Added open hardware logo and accompanying text.
 - Added Creative Commons License information.
- Version 1.1.0
 - Added 3.3V bleed off circuit for proper DW1000 start up state after power removed.
 - Pinned out RF-IRQ to TIOA0
 - Added optional 3.0V LDO for VDDBATT for use with TCXO.
 - Removed erase test points and added larger pads labeled as erase.

DWUSB-SMA	
 www.ciholas.com 3700 Bell Rd. Newburgh, IN 47630 812-962-9400 © 2016 CIHOLAS, Inc	rev: 1.1.0
	svn: 25992
	1 of 3
	3/25/2016 2:13:00 PM
File:dwusb-sma.SchDoc	



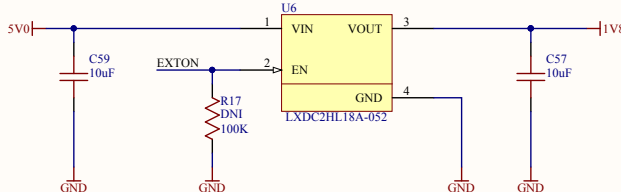
This work is licensed under a
Creative Commons Attribution 4.0 International License
<http://creativecommons.org/licenses/by/4.0>



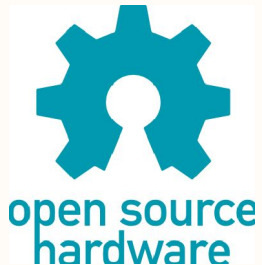
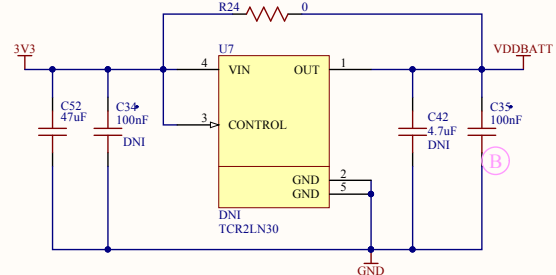
NOTES

- ① Place capacitor at pin 42.
- ② Place capacitor(s) close to DW1000 VDDBATT
- ③ Place capacitor(s) close to DW1000 VDDAON
- ④ Place capacitor(s) close to DW1000 VDDLNA
- ⑤ Place capacitor(s) close to DW1000 VDDPA1
- ⑥ Place capacitor(s) close to DW1000 VDDPA2
- ⑦ Place capacitor(s) close to DW1000 VDDIOA
- ⑧ Extra passive components allow the use of TCXO. Configuration shown is for crystal. See datasheet for the selected TCXO to determine correct configuration. LDO can be populated and bypass removed when used with TCXO
- ⑨ For optimal RF performance find layout reference documentation at <http://www.decawave.com/>

Switching Regulator



Linear Regulator ⑧



This work is licensed under a
Creative Commons Attribution 4.0 International License
<http://creativecommons.org/licenses/by/4.0>

DWUSB-SMA

CIHOLAS
www.ciholas.com
3700 Bell Rd.
Newburgh, IN 47630
812-962-9400
© 2016 CIHOLAS, Inc

rev: 1.1.0
svn: 25992
3 of 3
3/25/2016 2:13:00 PM

File:dw1000.SchDoc